

elods

presents

LERNER & LOEWE'S

My Fair Lady



The Wyllyotts Theatre
Potters Bar

wyllyottstheatre.co.uk

19 - 23 October 2021

noda

Be inspired by amateur theatre

Lerner and Loewe's
MY FAIR LADY

Book and Lyrics by
ALAN JAY LERNER

Music by
FREDERICK LOEWE

Adapted from George Bernard Shaw's Play and
Gabriel Pascal's Motion Picture "PYGMALION"

Original Production Directed and Staged by Moss Hart

This amateur production is presented by arrangement with
Music Theatre International (Europe)
All authorised performance materials are also supplied by MTI Europe



MUSIC THEATRE
INTERNATIONAL
Europe

12 – 14 Mortimer Street, London, W1T 3JJ, United Kingdom
+44 (0)20 7580 2827 | www.mtishows.co.uk

elods

presents

My Fair Lady



The award winning ELODS proudly presents *My Fair Lady*, a musical based on George Bernard Shaw's *Pygmalion*, with book & lyrics by Alan J. Lerner and music by Frederick Loewe.

Set in Edwardian London, Eliza Doolittle, a cockney flower girl, takes speech lessons from the pompous Professor Henry Higgins, to pass as a lady. Higgins and Eliza clash and then form an unlikely bond.

A story with heart and comedy, *My Fair Lady* is a beautiful musical about transformation, patronage, gender politics and class. With unforgettable songs such as *Wouldn't It Be Lovely*, *Get Me To The Church On Time* and *I Could Have Danced All Night*, this enchanting classic will be a real treat.

Committee

| | |
|---------------------|---|
| Chair: | Mark Shaw |
| Secretary: | Simon Dingomal |
| Treasurer: | Mark Tobin |
| Membership: | Angela Edmunds |
| Production Manager: | Lesley Clay |
| Publicity: | Helen Wikeley |
| General members: | Frank Bundle Fiona Corden Roger Bunnage |

Message from The Chair



It is crazy to think that rehearsals for My Fair Lady started in January 2020 with our show scheduled to open three months later, on 21st April. The rise of Covid-19 meant that by 17th March our show had to be cancelled, just over a month before opening night. Little did we know then that we would have to postpone the show twice more before finally being allowed to tread the boards again. Rehearsals recommenced in July 2021, after a 16 month break.

Our principal cast has fundamentally stayed the same with a couple of changes. A few ensemble members have had to drop out but they have been replaced by others who became available and we have welcomed three new members to the ELODS family.

We have also had some changes to our artistic team and we welcome back Sue Payne as director and Paula Bland as choreographer. Mark Newport remains as our resident musical director.

During the summer of 2020, we were very saddened to lose a dear member, Lisa Nnando-Shillingford to cancer and we purchased a clock in her memory which adorns the backstage dressing room corridor. A lovely dedication to Lisa appears later in the programme. Thanks are due to Alison Hall who was instrumental in organising the clock.

So, we are delighted to be back and are pleased to present to you one of the classic musicals of all time. I hope you enjoy the show.

Mark Shaw

Chair

October 2021

In Memory of Lisa Nnando-Shillingford

Lisa was a much-loved member of the ELODS family. She had a big heart and a big smile and she sprinkled love and happiness wherever she went.

She would often arrive at rehearsals on her bicycle, belongings flying everywhere, and she brought an immediate and positive energy to the room. She appeared in many of our most recent productions including Whistle Down the Wind, Acorn Antiques, Lend Me a Tenor, Fiddler on the Roof, Crazy for You, Parade and On the Town.

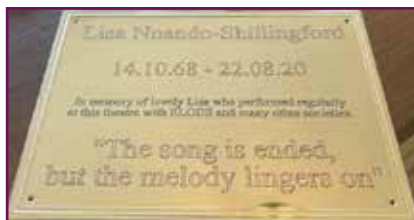
As a memorial to Lisa, we have arranged for a clock and a plaque to be displayed in the backstage area of Wylyyotts. Lisa was not known for her punctuality, and would have found it hilarious that we bought a clock in her memory!

We will think of Lisa every time we pass it as we head on down to the stage.

Rest in Peace Lisa – you are greatly missed xxx



"In memory of lovely Lisa who performed regularly at this theatre with ELODS and many other societies."



"The Song is ended, but the melody lingers on"



My Fair Lady in 1998!

Surprisingly, this is only the second time in ELODS history that we will have staged My Fair Lady. The first time was in 1998 at our old home, the Millfield Theatre. Back then we sold our own tickets by post only and accepted Postal Orders as well as cheques!

Familiar ELODS faces Greta Jenkins, Les Gershman, Hilary Thorne, Frank Bundle and Mark Newport were involved then and are once again involved today, over twenty years later! We are delighted to still have them as part of the society as well as an array of new faces.

So here's a trip down memory lane...



Musical Numbers

Act 1

Overture

Why Can't The English?

Higgins

Wouldn't It Be Lovely?

Eliza and Ensemble

With A Little Bit of Luck

Doolittle, Harry and Jamie

I'm An Ordinary Man

Higgins

Reprise – With a Little Bit of Luck

Doolittle and Ensemble

Just You Wait

Eliza

The Servants' Chorus

Servants

The Rain In Spain

Higgins, Eliza and Pickering

I Could Have Danced All Night

Eliza, Mrs Pearce and Maids

Ascot Gavotte

Ensemble

On The Street Where You Live

Freddy

Musical Numbers

Act II

Entr'acte

Promenade

Embassy Waltz

You Did It

Higgins, Pickering, Mrs Pearce and Servants

Reprise – Just You Wait

Eliza

Reprise – On The Street Where You Live

Freddy

Show Me

Eliza and Freddy

The Flower Market

Eliza and Cockney Men

Get Me To The Church On Time

Doolittle and Ensemble

A Hymn to Him

Higgins

Without You

Higgins and Eliza

I've Grown Accustomed To Her Face

Higgins

Finale

The Cast



Jude Stoughton *Eliza Doolittle*

Jude has performed in many productions for ELODS, both in the chorus and in principal roles. She is excited to be back on stage with her wonderful ELODS family. Jude is abso-bloomin-lutely delighted to be playing the role of Eliza Doolittle and to step into the shoes of her idol Audrey Hepburn.



John Isaac *Henry Higgins*

Having played Freddy Eynsford-Hill twenty years ago, John has always wanted to tackle the iconic role of Henry Higgins and is extremely grateful to ELODS for giving him the opportunity. Other recent roles at the Wyllyotts Theatre have included: Ché (Evita); Leo Bloom (The Producers); Mark (Rent); and Tick (Priscilla). By day, John teaches children to speak beautifully in a central London primary school.



Richard Hutchinson *Colonel Pickering*

Richard is excited to be appearing in this classic musical with ELODS. He has enjoyed playing a variety of character parts over the years including Harry the Horse in *Guys & Dolls*, the long suffering Underling in *The Drowsy Chaperone* and more recently the other half of the Vulgarian comedy duo Boris in *Chitty Chitty Bang Bang*. He wishes all the cast and crew a great show week and hopes you all enjoy the show.



Naomi Delamore *Mrs Pearce*

Naomi is thrilled to be performing with ELODS in this, one of her favourite musicals. She has performed with the company for over fifteen years and missed her ELODS family hugely during 2020. Her more recent ELODS roles include Anna in *the King and I* and Nelly Forbush in *South Pacific*.

The Cast



Henry Martin *Freddy Eynsford-Hill*

Henry has been performing with ELODS since 2012, and loves working and performing with such a talented, welcoming group. This will be Henry's 7th show with the company, having performed varied roles from the inept Bud Frump in *How to Succeed in Business Without Really Trying* to the revenge driven Frankie Epp in *Parade*. Henry is looking forward to treading the boards again after nearly a two year hiatus in this beautifully written musical theatre classic.



Stephen Milligan *Alfred Doolittle*

Stephen is happy to be playing the part of Doolittle, where a lot of old rubbish is involved!

He last performed in *My Fair Lady* at the tender age of 16 when still at school (So long ago it may well have been in Latin). He hopes "with a little bit of luck" that you all enjoy the show.



Leanne Lynch *Mrs Higgins*

Leanne is thrilled to be playing the role of Mrs Higgins. She joined Elods back in 1997 and has had so much fun. Some of her past roles have been, Mona in *Best Little Whore House in Texas*, The Duchess in *Me and My Girl* and her oldest role so far has been Yenta in *Fiddler on the Roof*. She hopes you enjoy the show.



David Watts *Harry / Cockney Quartet*

My Fair Lady is David's ninth show with ELODS and the first to require an English accent. For any Professors of Phonetics who may be curious, the character of Harry was brought up in Harrow, resided briefly in East Anglia, and has lived in Enfield for the last 30 years (in the course of which he was fortunate enough to make the acquaintance of Alfred P Doolittle Esquire). David's accent is therefore entirely authentic.



Mark Tobin *Jamie*

Mark is looking forward to having a good old 'knees up' as Jamie, one of Doolittle's drinking buddies. He is really pleased to be ticking off another classic musical from his 'must do' list and hopes everyone watching really enjoys the show.

The Ensemble



Zachary Anstee
Cockney Quartet



Emma Bell



Ellie Brunton



Roger Bunnage
Cockney Quartet



Stef Carpenter
Queen of Transylvania



Fiona Corden



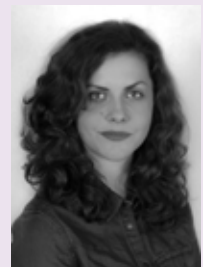
Nic Corden
Professor Zoltan Karpathy / Cockney Quartet



Les Gershman



Mark Harris



Emily Kennedy-Neal

The Ensemble



John Lynch
Bartender



Bethany Newport



Hannah Rourke



Matthew Sanderson



Sophie Shouls



Carolyn Sobers
Lady Boxington



John Stivey
Lord Boxington



Samantha Stringle
Mrs Eynsford-Hill



Clare Viccars



Helen Wikeley

The Production Team

| | |
|-------------------------------|-----------------------------------|
| Director | Susan Payne |
| Musical Director | Mark Newport |
| Choreographer | Paula Bland |
| Production Manager | Lesley Clay |
| Production Secretary | Greta Jenkins |
| Stage Manager | Frank Bundle |
| Lighting Design and Operation | John Castle |
| Sound Design and Operation | Peter Donaghey |
| Costumes | Hilary Thorne and Clare Viccars |
| Properties | Lesley Clay and Simon Dingomal |
| Artwork Design | Sunny Carter |
| Front of House | Michelle Shaw |
| Programme | Sue Jessel and Emily Kennedy-Neal |

The Orchestra

| | |
|----------------|-----------------------|
| Violin | Lucia D'Avanzo- Lewis |
| Cello | Lawrence Durkin |
| Bass | Alan Coughlan |
| Kit/Percussion | Kieran Newport |
| Flute | Jennie Small |
| Clarinet 1 | Sarah Brinkley |
| Clarinet 2 | Mark Hayes |
| Trumpet 1 | Sam Lewis |
| Trumpet 2 | Laura Garwin |
| Trombone | Matt Quick |
| Piano/MD | Mark Newport |

The Back Stage Crew

| | |
|---------------|------------------|
| Mark Shaw | Mitchel Lathbury |
| Nathan Carter | Cathryn Hunt |
| Andy Frost | Hannah Frost |
| Sue Pritchard | Hayley Bater |

For Wyllyotts Theatre

| | |
|-----------------------|----------------------------------|
| Theatre Manager | Ginny Williams |
| Technical Manager | Jack Chambers |
| Marketing Manager | Debbie Wiltshire |
| Box Office Supervisor | Karen Sheridan |
| Duty Managers | Samuel Etherington & Colin Burch |



Susan Payne *Director*

My Fair Lady was the first ever show I was in with Wood Green Operatic Society about a hundred years ago! It has a very special place in my memories and was the beginning of an involvement in amateur theatre that has shaped my life and given me fantastic friendships, lots of laughter and so many experiences. I have directed My Fair Lady twice before and was happy to take over from Natalie O'Sullivan, who was the original director before the show had to be postponed. The last show I directed for ELODS was South Pacific and I know the cast of My Fair Lady are thrilled to be able to perform again in front of you and I hope you all enjoy the experience of live theatre once again.



Mark Newport *Musical Director*

Mark has now been working with ELODS for over 30 years. Alongside this and teaching commitments, he has had a successful career in London's West End, working for many years on Les Misérables, for which he has conducted performances in London's West End and on the UK tour. Other West End credits on keyboards include Bombay Dreams, Cats, Chicago, Martin Guerre, Phantom of the Opera, Starlight Express, Sunset Boulevard, The Goodbye Girl and Woman in White. As Musical Director he has performed at Sadler's Wells, The Mermaid (Royal Gala), Whitehall and Bloomsbury theatres. He was also Assistant Conductor for the Opera East on six national **tours**. Mark has taught at Guildford School of Acting, Mountview and Guildhall and is a member of the Music Staff at Queenwood School Hertfordshire.



Paula Bland *Choreographer*

Paula is delighted to be back with ELODS to choreograph My Fair Lady. Having choreographed many shows for various local groups over the years she is no stranger to dealing with a variety of issues, so adapted easily to the new restrictions to enable local theatre to get back on stage. We thank you for coming to support us and hope you have a 'lively' evening.



Frank Bundle *Stage Manager*

Frank has been involved in amateur theatre for over 35 years. He became involved with ELODS when asked to crew for Sweet Charity in 1982. He has subsequently stage managed every major production bar one and has been involved in the design and construction of sets for several of our more recent shows. In 2011 he was presented with the prestigious NODA Flame Award for service to Amateur Theatre. My Fair Lady is Frank's 72nd show with ELODS!



Lesley Clay *Production Manager/Props*

This is Lesley's ninth show with ELODS and her first show as Production Manager, taking over the reins from Fiona. So far so good! Lesley is continuing with Props. Lesley was stage manager for two professional productions in 2019 and thoroughly enjoys learning all about backstage in a theatre.

She hopes you all enjoy My Fair Lady as much as the cast and crew have enjoyed putting it together.



Greta Jenkins *Production Secretary*

Greta has been a member of ELODS for nearly 40 years- playing many parts (usually rather peculiar ladies!), in various Committee roles and as Production Secretary for 10 years. Her professional experience includes being Vice Principal of a London drama school, a Theatrical Agent and working as a tutor on TV, feature films and with the Royal Shakespeare Company. She was also the producer of G and G productions, the resident theatre company at the Dugdale Theatre.



Hilary Thorne *Costumes*

After 25 years you would think costuming a show would be easy, but every one brings its own challenges and difficulties, which is why I enjoy it so much! Many thanks to Clare, Lesley and Juila for their help.



Clare Viccars *Costumes*

Clare has directed, choreographed and performed in many shows, revisiting old favourites as well as creating original pieces in both amateur and professional settings. With experience in different areas of production she will be turning her hand this time, and for the first time, to costuming. Thankfully she loves the fashion of the Edwardian period!



Michelle Shaw *Front of House*

NODA award-winning Front of House Manager Michelle has been meeting and greeting our patrons for many years. She is always looking for new volunteers to help with ushering and selling programmes, raffle tickets and ice creams. If you are interested in helping at future shows, please contact her on 07710 494 010.

Wishing the
cast & crew of
ELODS a fantastic
run for
My Fair Lady

**THE BARNET
LOCAL EN4**

THE LOCAL MAGAZINE FOR LOCAL PEOPLE



elods

would like to thank

The United Reformed Church, Compton Road N21

The Methodist Church, Old Park Ridings N21

Southgate Progressive Synagogue, Chase Road N14

for the use of their halls for our rehearsals







From the beginning!

The history of ELODS goes back to 1951 when the society was known as the Wheatsheaf Players, a group sponsored by the Co-operative Society and named after their monthly publication 'The Wheatsheaf'. The deal was that the Education committee of the Enfield Highway Co-operative Society provided £120 per year and in exchange, the Players put on one Gilbert and Sullivan Opera per year.

By 1953 however, the name was changed to Enfield Light Operatic Society and was run in connection with the Enfield Evening Institute, under the auspices of the Middlesex Education Committee. One of the earliest programmes we still have is of Iolanthe, which was performed at the Chase Secondary Modern Boys School in Churchbury Lane Enfield on April 26th – 28th 1962. The programme was six old pence – 2½ pence in modern money.

By 1965, the name had been changed to Enfield Light Operatic and Dramatic Society. One of the early pioneers of ELODS was Sid Griffiths who was chairman for many years, and he died prematurely in 1969 aged 63. Basil Gathergood took over. Yeoman of the Guard was performed that year. Programme price has doubled to one shilling (5p). We rehearsed at Ponders End Girls School.

At the start of the 1970's ELODS began to regularly perform two shows a year and the last show we performed at Enfield Grammar School was Merrie England in April 1970. There was a strike going on just prior to the autumn show and the caretaker of Enfield Grammar School wouldn't put out the chairs and wouldn't let ELODS put them out either. Katie Hinde was the producer at the time and got in touch with The Intimate Theatre in Palmers Green and we moved there. This was the first time ELODS had performed in a 'proper' theatre, and we never looked back. That first show at the Intimate was Me and My Girl with top price tickets at 10/- (50p).

By 1982, we were still performing at the Intimate. We performed Sweet Charity in the April. Mike Gilbert was Chairman; Sally Pearson was the treasurer and Paul Cody was on the committee. In the cast, Oscar was played by John Basham and Nickie by Julia Harris, Rose by Jean Streeton and Big Daddy by Howard Wright. MD was Bob Jury. The November 1982 production of the Card was noted by Frank Bundle's first role as stage manager.



From the beginning!

November 1985's production of Oklahoma is worth mentioning. Dora Basham was director. MD was Ally Kessler, but a certain Mark Newport is in the programme as rehearsal pianist. Geoff Knight was now Chairman, Richard Bodek was secretary and Joe Harris was Treasurer. The cast starred Greta Jenkins as Aunt Ella.

By 1989, we had moved to The Millfield Theatre – billed as North London's new theatre and our October 1989 production of Chicago had Gail Ashwell (our director for Curtains in April 2022) as 'Producer and Choreographer' and Mark Newport as Musical Director.

In 2003 we celebrated 50 years of ELODS with a Dinner and Dance on 1st March at the Apollo Suite Cockfosters.

We played at the Millfield for another 16 years until 2005 when we switched again to our present venue, The Wyllyotts Theatre Potters Bar where we have been ever since. In April 2013, we celebrated 60 years with another dinner dance but this time at the Winchmore Hill Cricket Club attended by many old and new members.

One of the most technically challenging shows of recent times was the last show that we performed here i.e., Chitty Chitty Bang Bang in October 2019. All the regular Chitty cars for hire were either too large to get through the doors or too heavy for the stage. Eventually we found a company in the west country that were building their own car from scratch, and which was the right size and weight. We ended up buying it and carried out lots of improvements. Nic Corden, our male lead in the show did most of the tinkering, which was quite apt. At the time, Chitty was released to amateurs and it seemed that other societies were having difficulties in procuring a car so were able to recoup the cost of the car by hiring it out to companies in Berwick on Tweed and Cambridge before it finally arrived in Potters Bar. We finally sold the car to a set hire company, and it made an appearance on the TV show Strictly Come Dancing in 2020!

ELODS is a wonderful company that goes from strength to strength. We aim to put on shows as professionally as we can which is why the average cost of staging a production can often exceed £25,000. At our heart however we try to remember that we are just a group of friends who like to put on shows.

elods

Would like to thank



ELODS are especially grateful to the entire cast and crew for their dedication and professionalism in the run up to staging this show during the nationwide situation that we have all been touched by in some way.

Thank you to Natalie O'Sullivan, our original director, and Rosie Cennamo, our original choreographer, for their vision and work before the pandemic halted our rehearsals and Spring 2020 production plans.

Thank you to Green Room Productions and Southgate Opera for scenery and props, Lesley Clay for sourcing and creating props and David Clay for painting the pub sign. Paul Lazell for the hire of the set and Frank Bundle, John Lynch and Mark Shaw for making a variety of additional set pieces. Thank you to Steve Beeston for this show's photography and Helen Wikeley for organising the publicity.

Thank you to Emily Kennedy-Neal and Simon Dingomal for organising the programme content and Sue Jessel for setting the programme for us.

Huge thanks to Clare Viccars for her hard work and dedication assisting Hilary Thorne with costumes and also to Dress Circle Costumiers of Witham for the sale of costumes for this production.

Finally, we would like to thank the members of the orchestra, all the technical team, volunteers and 'Friends of ELODS', as well as the backstage crew, front of house volunteers led by Michelle Shaw and assisted by Angela Edmunds, and Wyllyotts Theatre staff.

Our Past Shows



© Eye Definition Photography 2018



CAPTIVATE PHOTOGRAPHY

elods



© Eye Definition Photography 2018



© Eye Definition Photography 2018

elods



CAPTIVATE PHOTOGRAPHY



© Eye Definition Photography 2018



elods



The Down Chaperone © 2018 Captivate Photography



The Down Chaperone © 2018 Captivate Photography

Our Past Shows

elods

| | | |
|------|---|-------------------------------------|
| 2020 | <i>No shows due to Coronavirus pandemic</i> | |
| 2019 | On The Town | Chitty Chitty Bang Bang |
| 2018 | The Drowsy Chaperone | The King and I |
| 2017 | Crazy For You | Parade |
| 2016 | Legally Blonde - The Musical | Guys and Dolls |
| 2015 | South Pacific | Fiddler on The Roof |
| 2014 | Acorn Antiques-The Musical | Lend Me A Tenor-The Musical |
| 2013 | How To Succeed In Business | Whistle Down The Wind |
| 2012 | 42nd Street | Oklahoma! |
| 2011 | Thoroughly Modern Millie | Jesus Christ Superstar |
| 2010 | The Pajama Game | Kiss Me Kate |
| 2009 | The Wizard of Oz | Iolanthe |
| 2008 | Singing in the Rain | Annie |
| 2007 | Oliver | Hot Mikado |
| 2006 | High Society | Carousel |
| 2005 | The Pirates of Penzance | |
| 2004 | Cabaret | Calamity Jane |
| 2003 | The Boardwalk Gondoliers | South Pacific |
| 2002 | Sugar | Fiddler on the Roof |
| 2001 | Hello Dolly | The Best Little Whorehouse in Texas |
| 2000 | How To Succeed In Business | Oklahoma! |
| 1999 | Crazy For You | Me and My Girl |
| 1998 | My Fair Lady | Godspell |
| 1997 | Sweet Charity | High Society |
| 1996 | Billy | Annie |
| 1995 | 42nd Street | Anything Goes |
| 1994 | Fiddler on The Roof | The Mikado |
| 1993 | Kiss Me Kate | The Wizard of Oz |
| 1992 | Guys and Dolls | Guys and Dolls |
| 1991 | The Good Companions | Princess Ida |
| 1990 | The Pajama Game | Little Mary Sunshine |
| 1989 | The Pirates of Penzance | Chicago |
| 1988 | Godspell | Goldilocks and The Three Bears |
| 1987 | Finian's Rainbow | Cabaret |
| 1986 | The Mikado | Oh! What A Lovely War |

Our Past Shows

elods

| | | |
|------|---------------------------|---------------------------------|
| 1985 | The Sorcerer | Oklahoma! |
| 1984 | States Alive | Fiddler On The Roof |
| 1983 | Memories | The Gondoliers |
| 1982 | Sweet Charity | The Card |
| 1981 | Carousel | Call Me Madam |
| 1980 | Music Hall | Cabaret |
| 1979 | Free As Air | The Arcadians |
| 1978 | Oh! What A Lovely War | Orpheus In The Underworld |
| 1977 | Flappers and Flannels | The Maid of the Mountains |
| 1976 | Iolanthe | Olde Tyme Music Hall |
| 1975 | Fiddler On The Roof | How To Succeed In Business |
| 1974 | The Pajama Game | Salad Days |
| 1973 | Oklahoma | The Mikado |
| 1972 | Brigadoon | The Boyfriend |
| 1971 | Orpheus In The Underworld | Songs from Gilbert and Sullivan |
| 1970 | Merrie England | Me and My Girl |
| 1969 | The Yeoman Of The Guard | Return of Olde Tyme Music Hall |
| 1968 | Lilac Time | Olde Tyme Music Hall |
| 1967 | Ruddigore | An Evening of Music and Drama |
| 1966 | La Belle Helene | Trial By Jury |
| 1965 | The Mikado | |
| 1964 | Brigadoon | |
| 1963 | HMS Pinafore | |
| 1962 | Iolanthe | |
| 1961 | The Gondoliers | The Gypsy Baron |
| 1960 | The Pirates Of Penzance | |
| 1959 | Trial By Jury | |
| 1958 | Yeoman Of The Guard | |
| 1957 | The Mikado | |
| 1956 | Iolanthe | Patience |
| 1955 | The Gondoliers | |
| 1954 | HMS Pinafore | |
| 1953 | Trial By Jury | |

ELODS PRESENTS
KANDER & EBB'S



Tue 5 - Sat 9 April 2022

THE MUSICAL
COMEDY WHODUNIT

CURTAINS

from the creators of
"Cabaret" & "Chicago"

Box Office 01707 645005

www.wyllyottstheatre.co.uk

The Wyllyotts Theatre, Potters Bar, EN6 2HN

*Book by RUPERT HOLMES Music by JOHN KANDER Lyrics by FRED EBB
Original Book and Concept by PETER STONE. Additional Lyrics by JOHN KANDER and RUPERT HOLMES*

*"CURTAINS" is presented through special arrangement with and all authorised performance
materials are supplied by Theatrical Rights Worldwide (TRW), 122-124 Regent Street, London
W1B 5SA. www.theatricalrights.co.uk*